



WORKS 2007 > 2022

CATTAI



© L'Esprit de la Lettre Éditions, Genève, 2022
Suzanne Rivier-Devèze
30 chemin des Crêts de Champel
CH-1206 Genève

ISBN édition papier : 978-2-940587-31-5
ISBN édition numérique : 978-2-940587-32-2

Dépôt légal BGE, Genève et BNS, Berne, 2022

Photographies: © Silvano Cattai



esprit-de-la-lettre.swiss

CATTÀÏ

WORKS 2007–2022

Conception

Suzanne Rivier-Devèze

With texts by

Silvano Cattai

Alessandra Lukinovich

Simona Manfredi

In 1989, I left New-York where I was a painter and filmmaker. I moved to Italy and devoted myself to being a sculptor, working with stone, bronze and metal.

Brush with Fire

In 2000 I discovered the plasma-cutting method for steel which brought me back again to tamed painting.

From 2015 to 2020 I start to develop prints on paper, using the steel plasma as a matrix. I saw colours as becoming the protagonist, I understood that I was going to become a painter again.

During that period 2015 to 2020 I was commissioned by a private collector in Switzerland to achieve over 40 sculptures, of which 10 were monumental.

Plasma, a working tool that reaches an extremely high temperature in order to cut steel, compelled me to find a guideline in which I would explore my new way of painting. The period of time without painting allowed me a burst of spontaneity, the unthought gesture.

Aluminium, as substance, became a way to have a dialogue between sculpture and painting.

The lightness of movement, the speed and the urgency of the gesture that I had developed with the plasma, found themselves again in the immediate and essential way of application of colours for this new pictorial language.

My approach to understand these new paintings (2021-2022) is physical, like sculpture, the cutting of the space, the interaction of light on the surface of the aluminium which remains present as material.

Silvano Cattai | 2022

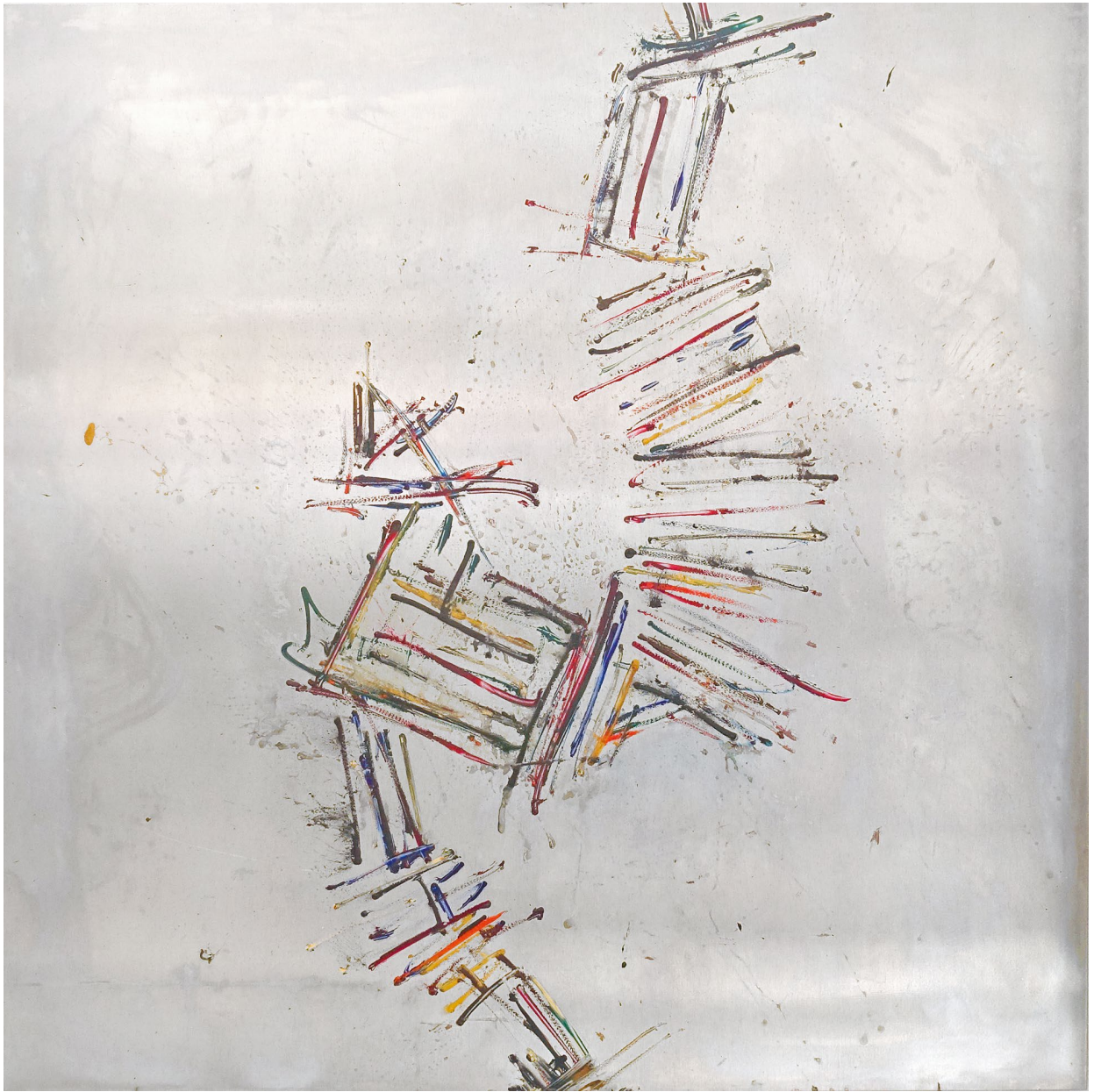




2022
Oil on aluminium plate, 50 x 50 cm



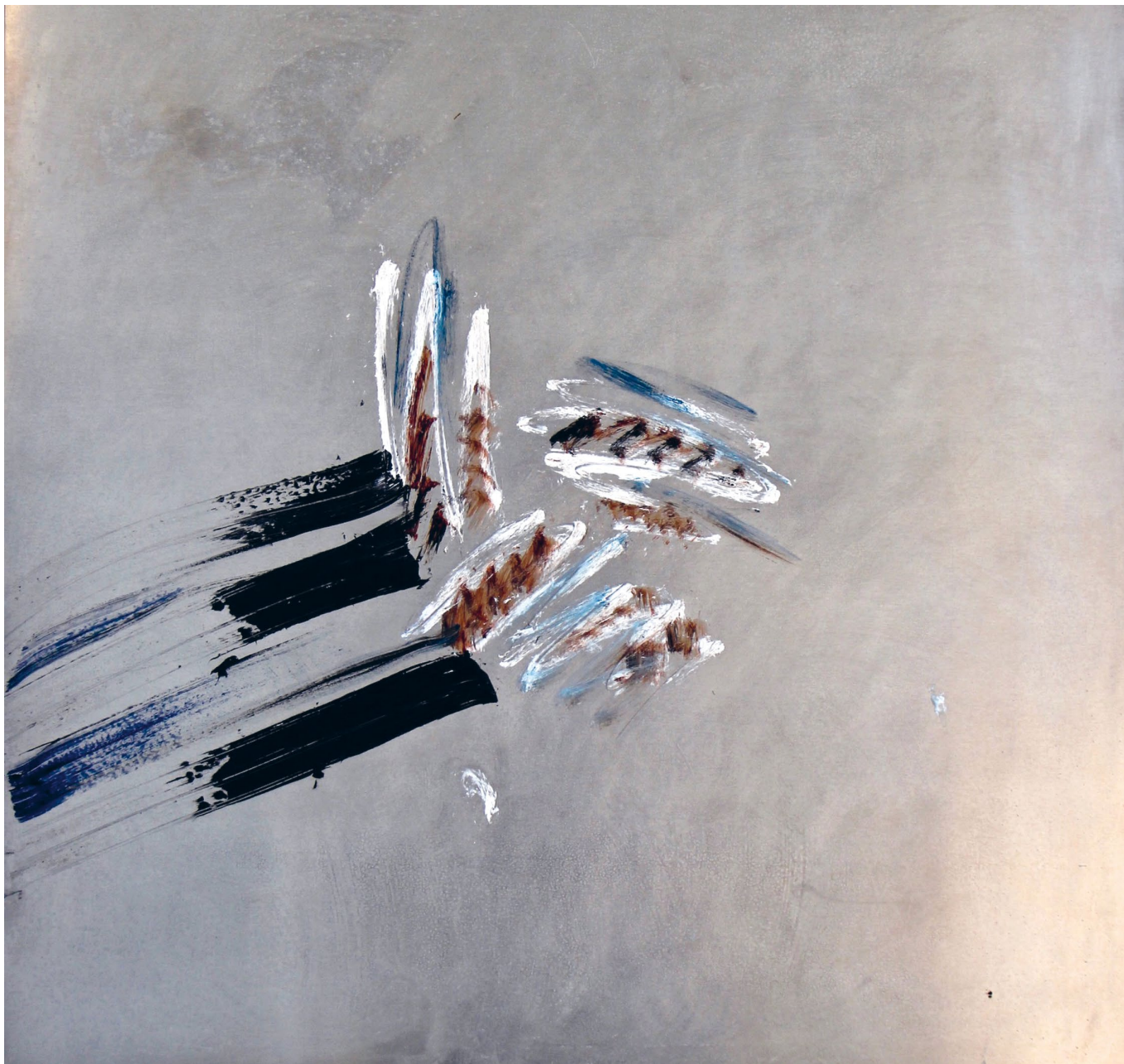
2022
Oil on aluminium plate, 120 x 120 cm



2022
Oil on aluminium plate, 120 x 120 cm



2014
Plasma, oil, chalk on steel plate, 40 x 45 cm



2022
Oil on aluminium plate, 120 x 120 cm



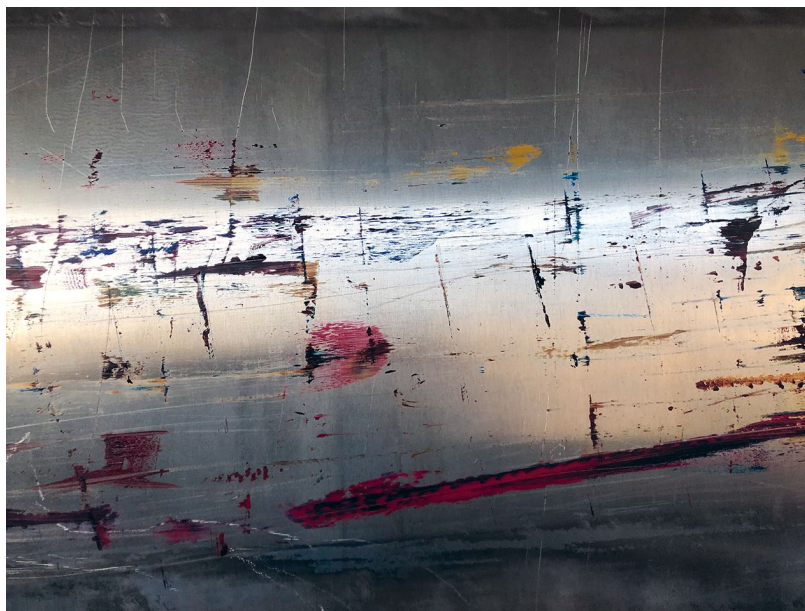
2022
Oil on aluminium plate, 50 x 50 cm



2022
Oil on aluminium plate, 120 x 120 cm



2022
Work in progress



2022
Oil on aluminium plates, details



2018
Monotype on paper, steel plasma matrix, 30 x 30 cm



2022
Oil on aluminium plate, 50 x 50 cm

Cattai becomes the director of those metal sheets, often in corten steel, and the idea that in holes, there is the story of light. It refers to a type of emptiness that refers to light; as in a camera lens or in the cinema, from which Cattai himself comes, among other things, with his working experience as a cameraman in Los Angeles, Paris and New York.

Simona Manfredi

2012
Plasma on steel plate, 164 x 68 cm
Private collection





And it's all very simple.

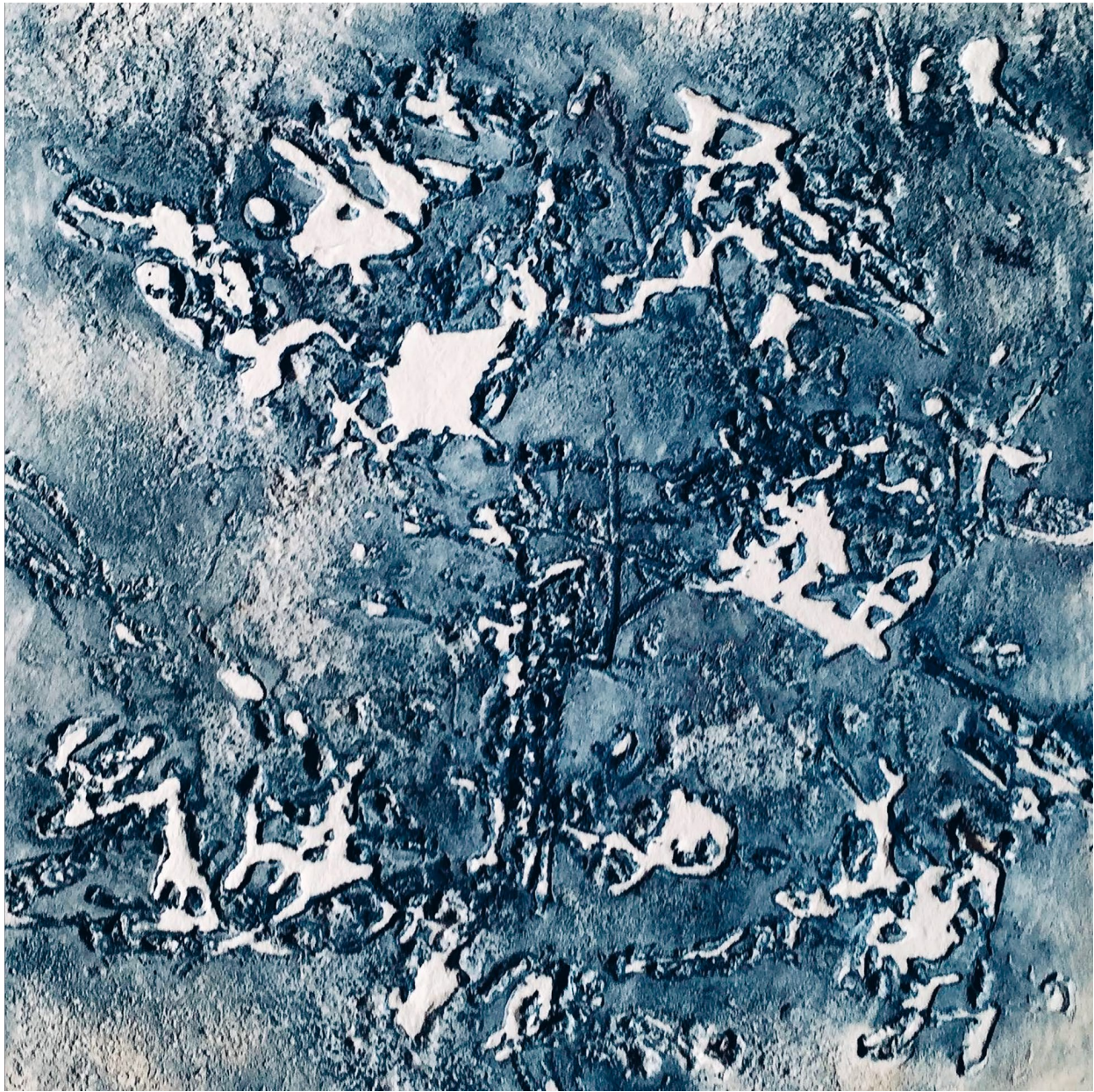
There is a metal sheet, there is a „pen of fire“: plasma, in fact.

The line does everything else : it goes, it makes.

Less is more.

Simona Manfredi

2016
Plasma on steel plate ,55 x 50 cm, detail
Private collection



2018
Monotype on paper, steel plasma matrix, 30 x 30 cm



2015
Plasma on steel plate, 60 x 65 cm



^

2022

Oil on aluminium plate, 50 x 50 cm, detail

>

2018

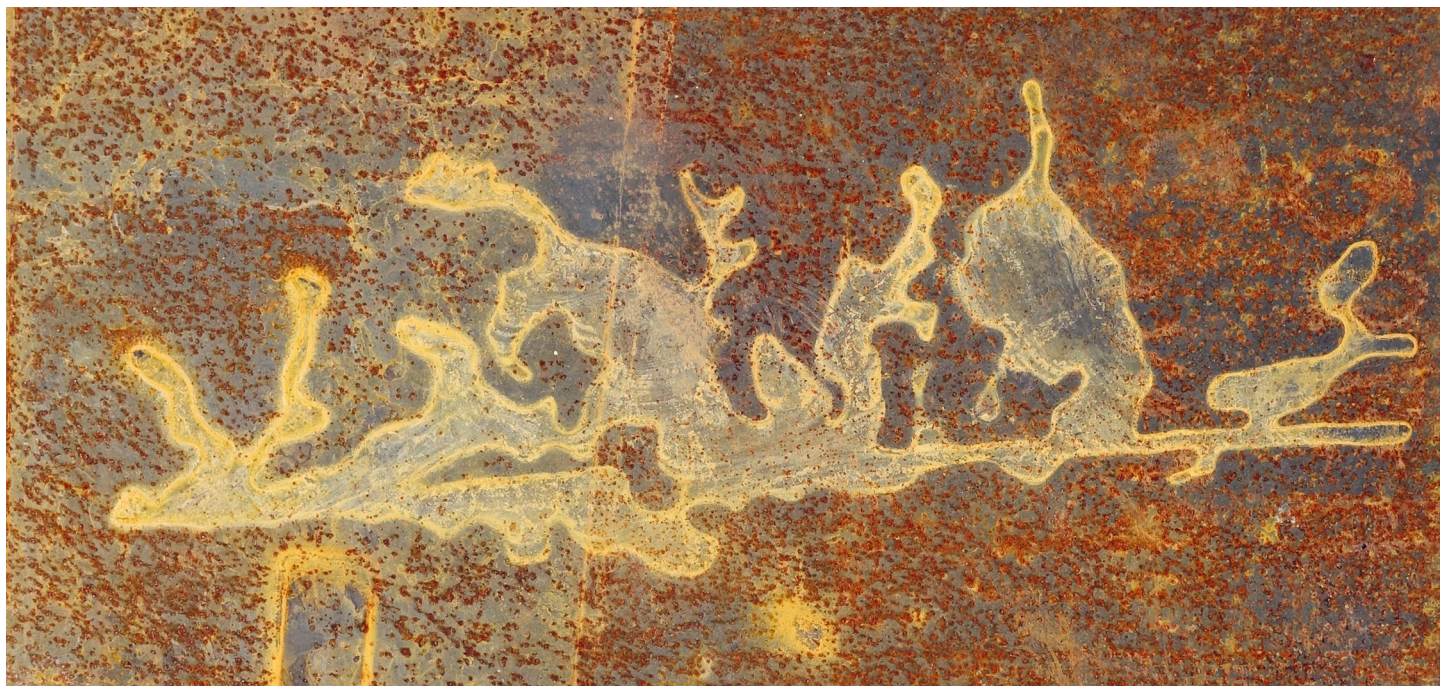
Sculpture, corten steel, plasma cutting, 200 x 80 cm. Private collection

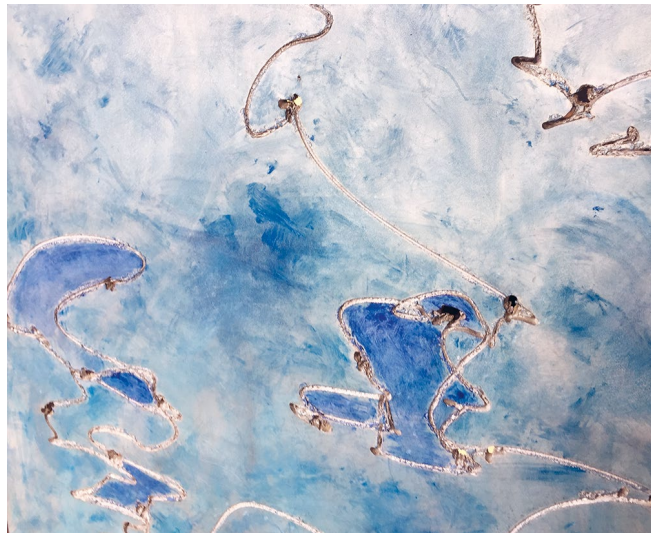
>>

2016

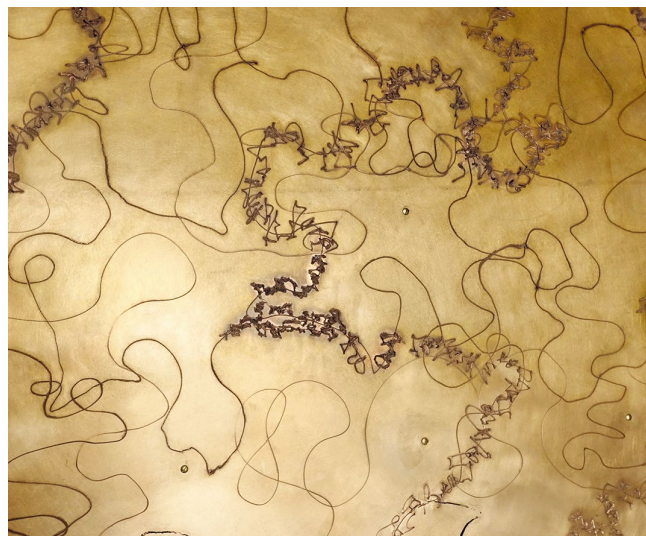
Plasma imprint on rusty steel plate in studio, 90 x 40 cm, detail

24





Details :
 ^
 2015
 Monotype on paper, steel plasma matrix
 ^^
 2007
 Plasma on steel plate
 >
 2020
 Oil on aluminium plate (folding screen)



2019
Door, plasma on bronze, 220 x 155 cm
and detail
Private collection



2019
Monotype on paper, steel plasma matrix, detail
Private collection



2022
Oil on aluminium, plasma, 50 x 50 cm

Les empreintes de Silvano Cattai peuvent être contemplées comme les lichens, ces tracés de la vie qui se fraie son chemin sur la dure surface de la roche, mais aussi comme les nuages travaillés par la force des vents, qui flottent suspendus dans les airs, contre le bleu du ciel.

Alessandra Lukinovich

2018

Monotype on paper, steel plasma matrix, 30 x 30 cm



Comme les traces figées, mais toujours palpitantes de grands événements on ne sait si telluriques ou célestes, des empreintes habitent la sérénité calme de ces surfaces.

Alessandra Lukinovich

2018
Monotype, steel plasma matrix, 30 x 30 cm





2014
Monotype on paper, steel plasma matrix, 40 x 60 cm



2017
Sculpture, stone, 220 x 130 x 110 cm.
Private collection



www.cattai.net

instagram > [_cattai_s](#)

Silvano CATTAI lives and works in Seravezza (Lucca - IT)

- 1951 Born in Belgium from Italian parents
- 1968 Graduates high school, Auvelais (BE).
- 1969 Moves to Paris (FR) to study films and human sciences at the University of Paris VIII.
works in cinema and paint (oil painting, acrylic, multimedia).
- 1979 Moves to USA to study cinema at the American Film Institute of Los Angeles.
- 1980 Moves to New York City to work in cinema and paint.
- 1984 Studies at the Art Student League in NYC and starts to sculpt.
- 1989 Moves to Italy (Pietrasanta - Carrara - Seravezza) to work exclusively stone, bronze and other metals.

Since the early 1990's Cattai devotes himself to sculpture, developing his personal research and showing in several European art galleries. In the meantime he realizes monumental and public sculptures around the world.

Since 2000, he works also with plasma-cutting method for steel, develops prints on paper with steel-plasma matrix, and paintings on aluminum.

From 2015 to 2020 he was commissioned by a private collector in Switzerland (Perroy) to achieve over 40 sculptures, of which 10 were monumental and 18 plasma aluminium paintings.

Private and public collections (sculpture symposiums commissions)

2015-2020 Perroy (CH)
2008 Caorle (IT)
2007 Shenzhen (CN)
2005 Hualien (TW)
Icheon (KR)
2001 Perros-Guirec (FR)
Tanger (MA)
Longo (BF)
2000 Chartreuse (FR)
Ben Amira (MR)
1999 Guilin (CN)
1998 Verona (IT)
1997 Serans, Normandie (FR)
1994 Seravezza (IT)
1988 Montvale, New Jersey (USA)
1987 Lorca (ES)
1985 BBH Enterprises, New York (USA)

Personnal exhibitions

2022 *Silvano Cattai. Almost Unthought*, Clare Hall, 23.06-04.08, Cambridge (GB)
2011 Galerie Nelly L'Eplattenier, Lausanne (CH)
2010 Galerie Sponte, Paris (FR)
Sala delle Grasce, Comune di Pietrasanta (IT)
2009 Da Filippo Albergo, Pietrasanta (IT)
Linee d'Emozione, Gestalt Gallery, Pietrasanta (IT)
2007 Galerie Nelly L'Eplattenier, Lausanne (CH)
2004 Tablart Gallery, Le Locle (CH)
2002 Gallery Bell'Arte, Maastricht (NL)
2000 *Mac 2000*, Paris (FR)
1996 Galerie Art-Mah Marc Huber (CH)
Gallery Bell'Arte, Maastricht (NL)
1995 *Mac 2000*, Paris (FR)
1992 Landucci, Querceta (IT)
1991 Rempire Gallery, New York (USA)
1990 Amilys Gallery, Bruxelles (BE)
1986 Barduffi Gallery, Scottsdale, Arizona (USA)
1984 Gallery 96, Paris (FR)

Group exhibitions

- 2022 *Cattai. Pitture recenti*, 19.03-18.04 2022, Anex Studio, Pietrasanta (IT)
2021 Sant'Agostino, Pietrasanta (IT)
2015 Galerie Marianne Brand, Geneva (CH)
2014 *Homo Faber III. Mindcraft*, 14.06-13-07 2014, Pietrasanta (IT)
2012 Luv-Art University of Belgrade (RS)
2010 Museo dei Bozzetti, Pietrasanta (IT)
2006 *Neuchâtoï*, Hôtel de Ville, Le Locle (CH)
2005 *Amor Marmoris*, Levigliani (IT)
2004 Piazza dell'Anfiteatro, Lucca (IT)
2003 *Enoliarte'03*, Fondazione Arkad, 23.04-04.05 2003, Seravezza (IT)
2002 Palazzo del Consiglio, Firenze (IT)
Fondazione Arkad, Seravezza (IT)
Galerie Art-Mah Marc Huber, Genève (CH)
2000 *Arte nella Citta*, La Spezia (IT)
Studi Aperti Asart, Pietrasanta (IT)
Gallery Bell'Arte, Maastricht (NL)
1999 Museo di Pescara (IT)
1998 Chateau Neercanne, Maastricht (NL)
Museo Pianeta Azzuro, Roma (IT)
1995 Jilie Gallery, Viareggio (IT)
Galerie Art-Mah Marc Huber, Genève (CH)
Mac 2000, Espace Eiffel-Branly, 09-20-11 1995, Paris (FR)
1994 Mostra Gioia Lazzerini, Pietrasanta (IT)
Centre culturel Louis Aragon, Orly (FR)
Salon d'Art Contemporain, Champigny (FR)
1993 Biblioteca Sant'Agostino, Pietrasanta (IT)
Galerie L'Art de Noé, Paris (FR)
1991 F. Amigo Gallery, Albuquerque, New Mexico (USA)
1989 *Brooklyn Outdoor Show*, Brooklyn (USA)
1988 Empire Fulton Ferry State Park, Brooklyn (USA)
1986 *10 on 8*, New York (USA)
1985 Free Lunch Alternative Space, New York (USA)
1984 Château Beauregard, Thuin (BE)
Phoenix Design Plaza, Phoenix (USA)
1983 Casa di Mateo Manzanilla, Mexico (MX)
1982 Westbeth Gallery, New York (USA)

Publications

- [*Silvano Cattai*] *Pietra*, 2014, text: Helaine Blumenfeld
[*Silvano Cattai*] *Empreintes*, 2015, texts: Alessandra Lukinovich, Silvano Cattai
[*Silvano Cattai*] *Plasma*, 2016, text: Simona Manfredi





Achevé d'imprimer
en juin 2022

